

February 11, 2012

Dear Friends,

We have reached the point where Black Hereford cattle sell themselves. Never has a breed been so perfectly situated in the beef industry. Herefords, in general, are in great demand for two reasons. First, consider rising feed costs. Herefords have among the lowest feed conversion rates. Second, consider the use of Angus on Angus genetics and the decline of hybrid vigor. Herefords boost vigor and eliminate the onset of recessive genetic defects in Angus cattle by cross-breeding.

However, Black Herefords add even more to Hereford demand. When used on black-hided cows, they produce offspring that qualify for market premiums by eliminating red baldies. Black hair color is the entry requirement for many value-based marketing programs. That is why the number of black-hided cattle doubled from 1995 to 2010. Today, two out of every three cattle on feed are black-hided. The USDA says that number will increase to 75% by 2015.

Perhaps more importantly there is now proof that Black Herefords have superior carcass quality when compared to calves out of Angus based cows, sired by traditional red Hereford bulls. Studies have shown the percentage of choice or better carcasses increase from 52% to 71% using a Black Hereford bull. When you consider the choice-select price difference, now that Wal-Mart has specified only choice grade for their stores, the increased ability to grade choice is a huge advantage.

The purpose of a Black Hereford is to advance Hereford genetics in an animal with better color and better carcass quality.

Thanks for your business.

Sincerely,
Joe & Norma Hoagland

For questions or to view the cattle before the sale call 913.727.6446

Lunch will be served before the sale at 11:30 A.M.

DIRECTIONS

- From Kansas City: go west on I-70 then north on I-435 to Leavenworth Road exit go west to 123rd St. then north 6 miles to the ranch.
- From Leavenworth: go south on State Highway 7 to Danny Zeck Ford dealership then east on State Highway 5 for 4 miles to the ranch.
- From the airport: exit airport south on I-29 to Highway 152 go west to I-435 then south crossing Missouri River to Wolcott Road exit (1st exit on Kansas side) follow Highway 5 for 6 miles to Ranch.

ACCOMMODATIONS

- Holiday Inn Express®
1931 Prairie Crossing
Kansas City, KS 66111
913-328-1024 ph
888-HOLIDAY toll free
- Country Inn and Suites
1805 N 110th Street
Kansas City, Kansas 66111
913-299-4700 ph
800-456-4000 toll free
- Comfort Inn
234 N 78th Street
Kansas City, Kansas 66112
913-299-4466 ph
800-4CHOICE toll free

PRE-SALE DINNER

We will host a free hamburger fry at the sale barn on Friday night, 5pm-7pm.

PRE-SALE VIDEO

During the dinner at the ranch there will be a video showing of all the cattle in the sale on a big screen tv. You can watch this video by clicking 2012 sale on our website at www.jnranch.net

DELIVERY

\$300 PER HEAD DELIVERY
to a major sale barn near you for all buyers.

Provided by:



Westmoreland, KS

AUCTION INFORMATION

Sale Terms and Conditions

1. The highest bid will be the buyer as recognized by the auctioneer.
2. All cattle will be on display throughout the sale day for inspection, and therefore all sales are final.
3. When an animal leaves the ring, it is the property and the entire responsibility of the buyer. Payment shall be made immediately after the sale before animals can be removed from the grounds.
4. Transfer fees and registration papers will be provided by the seller.
5. All persons who attend the sale do so at their own risk. Neither sale management, owners, nor anyone connected with this sale assumes any liability legal or otherwise.
6. Seller will provide delivery to central locations throughout the U.S. for an additional fee of \$300 per lot.

AUCTIONEER

Tommy Barnes
2060 South Hull Road, Montgomery, AL 36104
334-462-4004

REPRESENTATIVES

Guy Peverly	High Plains Journal	785-456-9911
Andrew Sylvester	Kansas Stockman	785-273-5115
Brett Spader	The Stock Exchange	785-633-5512
Tim Lackey	Missouri Beef Cattleman	573-588-2334

VETERINARIAN

Cedar Ridge Veterinary Clinic
Dr. Shawn T. McCoole, DVM
Atchison, KS

913-367-3600

HERD HEALTH

- At 60 days of age, calves were vaccinated with a modified live IBR, BVD, PI3, BRSV Vaccine with Haemophilus Somnus and an oil based blackleg shot with pinkeye vaccine.
- On August 22, the calves received a second round of vaccinations with Pasteurella instead of pinkeye. They were weaned on September 1st and were weighed on Sept. 15 and given a third round of vaccines, then wormed with injectable Dectomax on Oct. 1st. They were lice dipped on January 3rd.
- The entire cow herd was tested free of Bovine Viral Diarrhea (BVD and PI3) using blood tests to identify carriers of the disease.
- All bulls are guaranteed sound and have been examined with scrotal measurements. All females have been preg checked and are guaranteed bred using Biopryn blood tests.
- All cattle will sell with proper health papers for interstate shipment anywhere in the United States.

PREGNANCY TESTING

bioPRYN[®]

BioPRYN is a pregnancy detection procedure in cattle using a blood sample to measure the presence of a pregnancy-specific protein which is produced by the placenta of a growing fetus. The test is highly accurate but not perfect.

BREEDING GUARANTEE

We offer one of the best guarantees in the industry:

We guarantee that all breeding cattle sold by J&N Ranch, both bulls and females, are fertile to the best of our knowledge. To guarantee buyer satisfaction, if a bull purchased in this sale is injured at any time within a year of purchase, so as to make them functionally infertile, we will provide a satisfactory replacement (if available), or issue credit at a future J&N sale equal to the bull's purchase price less the salvage value. If a female is later determined to have been open at the time of the sale, we would offer a credit in the next J&N sale for the difference between her purchase price less the salvage value. We do not guarantee a live calf nor do we guarantee a bred female to breed back in the future. If a problem arises, please contact J&N before you cull the animal so arrangements can be made.

This guarantee will not replace a dead animal if it is killed or dies for any reason. We suggest that normal care needs to be exercised for any animal purchased and that yearling bulls not be allowed to get too thin. All claims must be verified by your local veterinarian.

ABHA EPD'S

Average EPD's by Breed:

	BW	WW	YW	M
AMERICAN RED HEREFORDS	+3.6	+42	+70	+16
	BW	WW	YW	M
AMERICAN BLACK HEREFORDS	+3.1	+42	+65	+14

REFERENCE SIRES



Feltons Sounder 912

Feltons Langworth 249

Feltons E97 DOD

JN 8323 13220197

JN Baldee 136

JN Dominet 919

JN BALDER 4136

HB000174

ANIMAL DATA	DOB	ACT BW	ADJ WW	WEANING RATIO	YEARLING SC
	2-21-2004	78	597	110	37
	ADJ YW	YEARLING RATIO	DAILY GAIN ON TEST	% HEREFORD	HOMOZYGOUS BLACK ?
	840	106	N/A	75%	NO
EPD'S	BW	WW	YW	M	M&G
	+1.1	+40	+60	+10	+30

A low-birthweight bull, his full brother is a herd sire for George Guilliams in Blossom, Texas. He had a 110 weaning ratio as a calf and has been profiled as an unusually high marbling bull. He is now owned by Jim Everett in Carrollton, Georgia.



Feltons 488

Feltons 615

FHR Venus 261

JN Balder 1905

JN Baldee 449

JN Baldee 110

JN BALDER 6449

HB000402

ANIMAL DATA	DOB	ACT BW	ADJ WW	WEANING RATIO	YEARLING SC
	1-28-2006	72	507	99	37
	ADJ YW	YEARLING RATIO	DAILY GAIN ON TEST	% HEREFORD	HOMOZYGOUS BLACK ?
	1023	101	N/A	PUREBRED	NO
EPD'S	BW	WW	YW	M	M&G
	+2.8	+51	+95	+14	+40

This bull was one of the first purebred Black Herefords ever produced. An easy-calving, high marbling bull with lots of thickness and muscle, he bred 79 out of 79 cows in his pasture over the last three seasons. We are now using two of his sons in our herd. He is now owned by Bobby Lide in Mexia, Texas and Dante McDougald in Apple Springs, Texas.



BJH Balder 7504

JN Balder 2903

JN Baldee 903

JN BALDER 7312

JN Domino 4036B 4ET

HB000610

JN Baldee 312

JN Baldee 073

ANIMAL DATA	DOB	ACT BW	ADJ WW	WEANING RATIO	YEARLING SC
	4-15-2007	80	541	109	N/A
	ADJ YW	YEARLING RATIO	DAILY GAIN ON TEST	% HEREFORD	HOMOZYGOUS BLACK ?
	996	105	N/A	68%	YES
EPD'S	BW	WW	YW	M	M&G
	+1.1	+34	+50	+16	+33

This bull is a low birth weight, homozygous black bull used almost exclusively on heifers.



Feltons Endurance 745

Feltons Performer 572

Feltons B32

JN BALDER 7108 (AMC)

Finks 7243 M of 4131 6148

HB000511

JN Baldee 108 (AMC)

JN Dominet 313 4ET

ANIMAL DATA	DOB	ACT BW	ADJ WW	WEANING RATIO	YEARLING SC
	2-21-2007	90	714	130	41
	ADJ YW	YEARLING RATIO	DAILY GAIN ON TEST	% HEREFORD	HOMOZYGOUS BLACK ?
	1062	112	N/A	75%	NO
EPD'S	BW	WW	YW	M	M&G
	+3.5	+50	+85	+19	+44

The loss of this bull to our breeding program was a real disappointment. The American Angus Association labeled his dam's sire, which we bought from Galen Fink, as an AM carrier and our DNA testing confirmed that the recessive AM gene carried through to this bull. As a result, we have destroyed the bull and tested all of his descendants. He was a very fertile bull. His yearling scrotal measurement of 41 cm had placed him in the top 1% for scrotal size.



Feltons Langworth 249

JN Balder 1905

JN Baldee 905

JN BALDER 7130

Finks 7243 M of 4131 6148

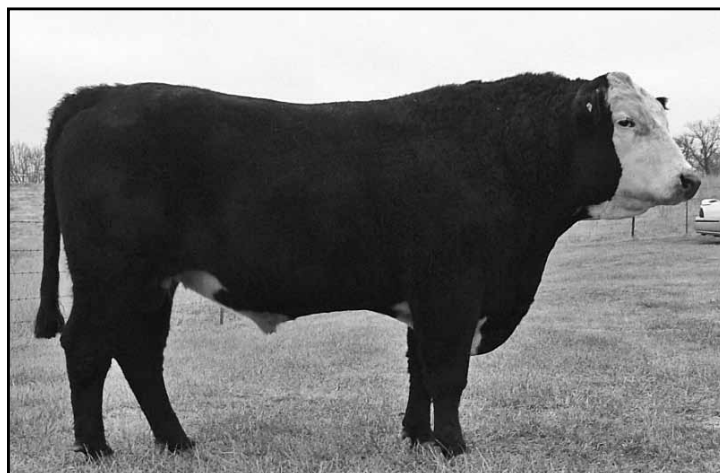
JN Baldee 130 (AMF)

JN Dominet 417 4ET DOD

HB000560

ANIMAL DATA	DOB	ACT BW	ADJ WW	WEANING RATIO	YEARLING SC
	3-26-2007	84	655	132	41
	ADJ YW	YEARLING RATIO	DAILY GAIN ON TEST	% HEREFORD	HOMOZYGOUS BLACK ?
	1127	118	N/A	62%	NO
EPD'S	BW	WW	YW	M	M&G
	+2.4	+48	+83	+12	+36

The only son of 1905 we still have, he is a low birthweight bull with good performance. We have used him a lot on heifers.



Feltons 615

JN Balder 6449

JN Baldee 449

JN BALDER 8622

Feltons 613

JN Baldee 622

JN Baldee 237

HB000813

ANIMAL DATA	DOB	ACT BW	ADJ WW	WEANING RATIO	YEARLING SC
	2-20-2008	90	593	102	35
	ADJ YW	YEARLING RATIO	DAILY GAIN ON TEST	% HEREFORD	HOMOZYGOUS BLACK ?
	1006	108	N/A	84%	YES
EPD'S	BW	WW	YW	M	M&G
	+3.5	+49	+91	+13	+37

8622 is homozygous black and homozygous polled. He is a long bodied son of 6449. J Bar B Ranch in Grandview, TX, owns a full brother to this bull. His calves are some of our best.



JN Balder 1905

JN Balder 4126

JN Baldee 126

JN BALDER 8079

HB000856

Vermilion 7337 George 3976

JN Baldee 079

SR MS Mark Dom 5116

ANIMAL DATA	DOB	ACT BW	ADJ WW	WEANING RATIO	YEARLING SC
	3-4-2008	100	657	113	34
	ADJ YW	YEARLING RATIO	DAILY GAIN ON TEST	% HEREFORD	HOMOZYGOUS BLACK ?
	1050	112	N/A	62%	NO
EPD'S	BW	WW	YW	M	M&G
	+4.9	+54	+94	+20	+47

His dam JN Baldee 079 was our top indexing cow. She never weaned a calf with an actual weight less than 600 lbs. This bull combines growth and maternal traits as well as any bull we've ever had. His milk + growth at 47 is the highest of any of our herd bulls.



Feltons 615

JN Balder 6449

JN Baldee 449

JN BALDER 9405

HB001218

Feltons Long Ton 205

JN Baldee 405

JN Baldee 955

ANIMAL DATA	DOB	ACT BW	ADJ WW	WEANING RATIO	YEARLING SC
	3-6-2009	79	654	112	40
	ADJ YW	YEARLING RATIO	DAILY GAIN ON TEST	% HEREFORD	HOMOZYGOUS BLACK ?
	1080	107	N/A	82%	YES
EPD'S	BW	WW	YW	M	M&G
	+1.4	+53	+98	+16	+42

We think 9405 is the best bull we have ever raised. He is homozygous black with low birthweight and high performance EPDs.

Feltons 620

JN Balder 7493

JN Baldee 493

LJR Paymaster 179A

LJR Gwen 190R

LJR Victra Rose, 167N

GZF 928 TURNING POINT

ANIMAL DATA	DOB	ACT BW	ADJ WW	WEANING RATIO	YEARLING SC
-------------	-----	--------	--------	---------------	-------------

2-8-2009 81

ADJ YW	YEARLING RATIO	DAILY GAIN ON TEST	% HEREFORD	HOMOZYGOUS BLACK ?
--------	----------------	--------------------	------------	--------------------

EPD'S	BW	WW	YW	M	M&G
-------	----	----	----	---	-----

+1.7 +38 +56 +18 +37

*This bull was our choice at the **In the Black Sale** last spring in Texas. He is a low birth weight bull with smooth shoulders and a long body. He was raised by Ground Zero Farms in Oklahoma.*

BLACK HEREFORD BULLS

These bulls were all born in the Spring of 2011, they had an average adjusted weaning weight at 610 lbs. They have an average adjusted yearling weight of 1021 lbs. Their average birth weight was 88 lbs. Their average daily gain on a 107 day test was 3.02 lbs. The bulls are listed in order by age of their dam. There are 26 homozygous black bulls in the sale. There are only 2 horned bulls and they have both been weighted. The rest are polled or have scurs. Some have small horns, too small to put weights on so we did not call them horned. However, they may be horns and not just scurs.

Lot

Feltons Langworth 249

JN Balder 4136

JN Baldee 136

JN BALDER Y962

Vermilion 7337 George 3976

HB002689

JN Baldee 962

SR Lady Time 0132

ANIMAL DATA	DOB	ACT BW	ADJ WW	WEANING RATIO	YEARLING SC
-------------	-----	--------	--------	---------------	-------------

2-23-2011 87 603 100 38

1-15-10 WEIGHT	ADJ YW	YEARLING RATIO	DAILY GAIN ON TEST	% HEREFORD	HOMOZYGOUS BLACK ?
----------------	--------	----------------	--------------------	------------	--------------------

910 1003 98 2.90 62% NO

EPD'S	BW	WW	YW	M	M&G
-------	----	----	----	---	-----

+1.8 +42 +64 +20 +41



Lot 2

JN Balder 6449

JN Balder 8622

JN Baldee 622

JN BALDER Y965

Vermilion 7337 George 3976

HB002529**JN Baldee 965**

SR Lady Encore 7154

ANIMAL DATA	DOB	ACT BW	ADJ WW	WEANING RATIO	YEARLING SC
	3-13-2011	96	651	106	34
1-15-10 WEIGHT	ADJ YW	YEARLING RATIO	DAILY GAIN ON TEST	% HEREFORD	HOMOZYGOUS BLACK ?
960	1126	110	3.36	67%	NO
EPD'S	BW	WW	YW	M	M&G
	+3.8	+48	+84	+21	+44

**Lot 3**

JN Balder 6449

JN Balder 8622

JN Baldee 622

JN BALDER Y023

JN Domino 4794 E 4ET

HB002509**JN Baldee 023**

AVF Georgina 877

ANIMAL DATA	DOB	ACT BW	ADJ WW	WEANING RATIO	YEARLING SC
	3-06-2011	85	568	93	35
1-15-10 WEIGHT	ADJ YW	YEARLING RATIO	DAILY GAIN ON TEST	% HEREFORD	HOMOZYGOUS BLACK ?
845	960	94	2.85	67%	YES
EPD'S	BW	WW	YW	M	M&G
	+3.3	+45	+77	+17	+40

Lot 4

JN Balder 6449

JN Balder 8622

JN Baldee 622

JN BALDER Y026

JN Domino 4794E 4 ET

HB002688**JN Baldee 026**

AVF Erica 784

ANIMAL DATA	DOB	ACT BW	ADJ WW	WEANING RATIO	YEARLING SC
	3-5-2011	87	603	100	35
1-15-10 WEIGHT	ADJ YW	YEARLING RATIO	DAILY GAIN ON TEST	% HEREFORD	HOMOZYGOUS BLACK ?
885	1003	98	2.90	67%	NO
EPD'S	BW	WW	YW	M	M&G
	+4.2	+46	+82	+15	+38

Lot 5

JN Balder 6449

JN Balder 8622

JN Baldee 622

JN BALDER Y090

Vermilion 7337 George 3976

HB002510**JN Baldee 090 (IEF)**

SR MS Advance 4114 (IE POSS)

ANIMAL DATA	DOB	ACT BW	ADJ WW	WEANING RATIO	YEARLING SC
	3-4-2011	78	600	98	36
1-15-10 WEIGHT	ADJ YW	YEARLING RATIO	DAILY GAIN ON TEST	% HEREFORD	HOMOZYGOUS BLACK ?
875	985	97	2.80	67%	YES
EPD'S	BW	WW	YW	M	M&G
	+4.7	+47	+79	+20	+44

Lot 6

Feltons Langworth 249

JN Balder 4136

JN Baldee 136

JN BALDER Y120

JN Domino 4036B 4 ET

HB002511**JN Baldee 120**

AVF Blackcap 637

ANIMAL DATA	DOB	ACT BW	ADJ WW	WEANING RATIO	YEARLING SC
	2-24-2011	78	484	79	34
1-15-10 WEIGHT	ADJ YW	YEARLING RATIO	DAILY GAIN ON TEST	% HEREFORD	HOMOZYGOUS BLACK ?
740	809	79	2.43	62%	NO
EPD'S	BW	WW	YW	M	M&G
	+0.4	+40	+60	+17	+37

*This bull is horned. He would work well on heifers.***Lot 7**

JN Balder 6449

JN Balder 8622

JN Baldee 622

JN BALDER Y312

JN Domino 4036B 4ET

HB002512**JN Baldee 312**

JN Baldee 073

ANIMAL DATA	DOB	ACT BW	ADJ WW	WEANING RATIO	YEARLING SC
	4-6-2011	89	723	118	39
1-15-10 WEIGHT	ADJ YW	YEARLING RATIO	DAILY GAIN ON TEST	% HEREFORD	HOMOZYGOUS BLACK ?
875	1085	106	2.66	80%	YES
EPD'S	BW	WW	YW	M	M&G
	+2.5	+45	+76	+18	+41

*We have a half brother 7312 out of same cow.***Lot 8**

Feltons 615

JN Balder 6449

JN Baldee 449

JN BALDER Y334

BJH Balder 7504

HB002436**JN Baldee 334**

JN Baldee 005 (AMF)

ANIMAL DATA	DOB	ACT BW	ADJ WW	WEANING RATIO	YEARLING SC
	3-2-2011	87	636	104	39
1-15-10 WEIGHT	ADJ YW	YEARLING RATIO	DAILY GAIN ON TEST	% HEREFORD	HOMOZYGOUS BLACK ?
905	1006	99	2.71	75%	NO
EPD'S	BW	WW	YW	M	M&G
	+2.7	+43	+76	+16	+38

Lot 9

JN Balder 4126

JN Balder 8079

JN Baldee 079

JN BALDER Y406

JN Balder 1974

HB002437**JN Baldee 406**

JN Baldee 212

ANIMAL DATA	DOB	ACT BW	ADJ WW	WEANING RATIO	YEARLING SC
	2-23-2011	88	577	94	39
1-15-10 WEIGHT	ADJ YW	YEARLING RATIO	DAILY GAIN ON TEST	% HEREFORD	HOMOZYGOUS BLACK ?
870	954	94	2.76	68%	YES
EPD'S	BW	WW	YW	M	M&G
	+4.6	+51	+89	+13	+38

Lot 10

JN Balder 6449

JN Balder 8622

JN Baldee 622

JN BALDER Y413

JAK 7085 C M K22

HB002513**JN Baldee 413**

JAK Ms Virginia C101

ANIMAL DATA	DOB	ACT BW	ADJ WW	WEANING RATIO	YEARLING SC
	2-17-2011	87	666	109	32
1-15-10 WEIGHT	ADJ YW	YEARLING RATIO	DAILY GAIN ON TEST	% HEREFORD	HOMOZYGOUS BLACK ?
960	1026	100	2.61	67%	YES
EPD'S	BW	WW	YW	M	M&G
	+1.7	+48	+86	+20	+44

Lot 11

N Balder 6449

JN Balder 8622

JN Baldee 622

JN BALDER Y429

JAK L1 Domino H448

HB002514**JN Baldee 429**

Sedgwicks Georgina 6102

ANIMAL DATA	DOB	ACT BW	ADJ WW	WEANING RATIO	YEARLING SC
	3-11-2011	98	613	100	34
1-15-10 WEIGHT	ADJ YW	YEARLING RATIO	DAILY GAIN ON TEST	% HEREFORD	HOMOZYGOUS BLACK ?
815	915	90	2.30	67%	NO
EPD'S	BW	WW	YW	M	M&G
	+2.1	+44	+75	+15	+38

Lot 12

Feltons Langworth 249

JN Balder 4136

JN Baldee 136

JN BALDER Y451

JAK Double Take L417

HB002515**JN Baldee 451**

JAK L1 Dominette J47

ANIMAL DATA	DOB	ACT BW	ADJ WW	WEANING RATIO	YEARLING SC
	2-20-2011	91	674	110	39
1-15-10 WEIGHT	ADJ YW	YEARLING RATIO	DAILY GAIN ON TEST	% HEREFORD	HOMOZYGOUS BLACK ?
935	991	97	2.38	62%	NO
EPD'S	BW	WW	YW	M	M&G
	+4.7	+45	+72	+16	+38

Lot 13Feltons 615
JN Balder 6449
JN Baldee 449**JN BALDER Y454****HB002439**JN Balder 1974
JN Baldee 454
JN Baldee 242

ANIMAL DATA	DOB	ACT BW	ADJ WW	WEANING RATIO	YEARLING SC
	4-16-2011	87	563	92	34
1-15-10 WEIGHT	ADJ YW	YEARLING RATIO	DAILY GAIN ON TEST	% HEREFORD	HOMOZYGOUS BLACK ?
780	1008	99	3.18	78%	YES
EPD'S	BW	WW	YW	M	M&G
	+2.3	+45	+77	+13	+35

*This bull is young but really caught up on feed with bulls much older than him.***Lot 14**Feltons Performer 572
JN Balder 7108 (AMC)
JN Baldee 108 (AMC)**JN BALDER Y473 (AMF)****HB002516**EE 394 Hy Trend 819
JN Baldee 473
EE Ms 307 L1 6156

ANIMAL DATA	DOB	ACT BW	ADJ WW	WEANING RATIO	YEARLING SC
	3-2-2011	88	704	115	38
1-15-10 WEIGHT	ADJ YW	YEARLING RATIO	DAILY GAIN ON TEST	% HEREFORD	HOMOZYGOUS BLACK ?
1065	1103	108	3.60	62%	YES
EPD'S	BW	WW	YW	M	M&G
	+2.7	+43	+68	+20	+42

*DNA tested clean. He is 3rd highest gain on test.***Lot 15**JN Balder 6449
JN Balder 8622
JN Baldee 622**JN BALDER Y475****HB002517**EE 394 Hy Trend 819
JN Baldee 475 (IEF)
EE Ms 5102 L1 0108(IE POSS)

ANIMAL DATA	DOB	ACT BW	ADJ WW	WEANING RATIO	YEARLING SC
	2-23-2011	88	788	129	37
1-15-10 WEIGHT	ADJ YW	YEARLING RATIO	DAILY GAIN ON TEST	% HEREFORD	HOMOZYGOUS BLACK ?
1100	1196	117	2.94	67%	YES
EPD'S	BW	WW	YW	M	M&G
	+1.9	+45	+76	+19	+42

This bull is a top prospect. Highest weaning and second highest yearling bull.

Lot 16Feltons Performer 572
JN Balder 7108 (AMC)
JN Baldee 108 (AMC)**JN BALDER Y482 (AMF)**

JAK L1 Domino L45

HB002519**JN Baldee 482**

JAK Ms Americus G109

ANIMAL DATA	DOB	ACT BW	ADJ WW	WEANING RATIO	YEARLING SC
	2-2-2011	78	680	111	38
1-15-10 WEIGHT	ADJ YW	YEARLING RATIO	DAILY GAIN ON TEST	% HEREFORD	HOMOZYGOUS BLACK ?
1005	1103	108	3.04	62%	NO
EPD'S	BW	WW	YW	M	M&G
	+3.2	+47	+78	+20	+43

This bull tested clean and is a top prospect.**Lot 17**Feltons Langworth 249
JN Balder 4136
JN Baldee 136**JN BALDER Y483**

JAK Double Take L417

HB002520**JN Baldee 483**

JAK L1 Dominette K173

ANIMAL DATA	DOB	ACT BW	ADJ WW	WEANING RATIO	YEARLING SC
	2-23-2011	74	502	82	37
1-15-10 WEIGHT	ADJ YW	YEARLING RATIO	DAILY GAIN ON TEST	% HEREFORD	HOMOZYGOUS BLACK ?
815	910	89	2.94	62%	YES
EPD'S	BW	WW	YW	M	M&G
	+2.8	+43	+68	+15	+37

Lot 18Feltons Performer 572
JN Balder 7108 (AMC)
JN Baldee 108 (AMC)**JN BALDER Y493 (AMF)**

JAK L1 Domino H448

HB002521**JN Baldee 493**

JAK Ms Prompter E36

ANIMAL DATA	DOB	ACT BW	ADJ WW	WEANING RATIO	YEARLING SC
	2-20-2011	88	615	101	39
1-15-10 WEIGHT	ADJ YW	YEARLING RATIO	DAILY GAIN ON TEST	% HEREFORD	HOMOZYGOUS BLACK ?
985	1098	108	3.41	62%	NO
EPD'S	BW	WW	YW	M	M&G
	+1.5	+44	+71	+20	+42

This bull is DNA tested clean.

Lot 19Feltons Langworth 249
JN Balder 4136
JN Baldee 136**JN BALDER Y498****HB002522**JAK L1 Domino L45
JN Baldee 498
JAK Ms 7085 C M L65

ANIMAL DATA	DOB	ACT BW	ADJ WW	WEANING RATIO	YEARLING SC
	2-23-2011	86	587	96	37
1-15-10 WEIGHT	ADJ YW	YEARLING RATIO	DAILY GAIN ON TEST	% HEREFORD	HOMOZYGOUS BLACK ?
920	1025	100	3.13	62%	NO
EPD'S	BW	WW	YW	M	M&G
	+2.4	+44	+72	+16	+38

Lot 20Feltons Langworth 249
JN Balder 4136
JN Baldee 136**JN BALDER Y519****HB002523**JN Balder 2903
JN Baldee 519
JN Baldee 303

ANIMAL DATA	DOB	ACT BW	ADJ WW	WEANING RATIO	YEARLING SC
	3-28-2011	86	510	83	33
1-15-10 WEIGHT	ADJ YW	YEARLING RATIO	DAILY GAIN ON TEST	% HEREFORD	HOMOZYGOUS BLACK ?
765	933	91	3.04	75%	NO
EPD'S	BW	WW	YW	M	M&G
	+2.0	+37	+55	+7	+26

**Lot 21**Feltons 615
JN Balder 6449
JN Baldee 449**JN BALDER Y525****HB002440**JN Balder 1905
JN Baldee 525 (IEF)
JN Baldee 973 (IE POSS)

ANIMAL DATA	DOB	ACT BW	ADJ WW	WEANING RATIO	YEARLING SC
	3-19-2011	100	601	98	37
1-15-10 WEIGHT	ADJ YW	YEARLING RATIO	DAILY GAIN ON TEST	% HEREFORD	HOMOZYGOUS BLACK ?
855	1009	99	2.95	75%	YES
EPD'S	BW	WW	YW	M	M&G
	+4.4	+52	+89	+12	+38

Lot **22**

Feltons 615
JN Balder 6449
JN Baldee 449

JN BALDER Y548

HB002441

Feltons Langworth 249
JN Baldee 548
JN Baldee 079

ANIMAL DATA	DOB	ACT BW	ADJ WW	WEANING RATIO	YEARLING SC
	2-20-2011	88	625	102	34
1-15-10 WEIGHT	ADJ YW	YEARLING RATIO	DAILY GAIN ON TEST	% HEREFORD	HOMOZYGOUS BLACK ?
965	1063	104	3.13	82%	YES
EPD'S	BW	WW	YW	M	M&G
	+2.9	+50	+88	+15	+39

Lot **23**

Feltons 615
JN Balder 6449
JN Baldee 449

JN BALDER Y603

HB002442

JN Balder 1905
JN Baldee 603
JN Baldee 063 (IEF)

ANIMAL DATA	DOB	ACT BW	ADJ WW	WEANING RATIO	YEARLING SC
	2-18-2011	89	610	100	38
1-15-10 WEIGHT	ADJ YW	YEARLING RATIO	DAILY GAIN ON TEST	% HEREFORD	HOMOZYGOUS BLACK ?
895	957	94	2.57	75%	YES
EPD'S	BW	WW	YW	M	M&G
	+3.6	+52	+92	+8	+34

Lot **24**

JN Balder 4126
JN Balder 8079
JN Baldee 079

JN BALDER Y606

HB002437

JN Balder 1974
JN Baldee 406
JN Baldee 212

ANIMAL DATA	DOB	ACT BW	ADJ WW	WEANING RATIO	YEARLING SC
	2-21-2011	84	523	85	34
1-15-10 WEIGHT	ADJ YW	YEARLING RATIO	DAILY GAIN ON TEST	% HEREFORD	HOMOZYGOUS BLACK ?
860	961	94	3.13	75%	NO
EPD'S	BW	WW	YW	M	M&G
	+3.6	+52	+92	+10	+36

Lot **25**

JN Balder 4126
JN Balder 8079
JN Baldee 079

JN BALDER Y608

HB002513

Feltons Performer 572
JN Baldee 608 (AMF)
JN Baldee 010

ANIMAL DATA	DOB	ACT BW	ADJ WW	WEANING RATIO	YEARLING SC
	2-28-2011	98	512	84	34
1-15-10 WEIGHT	ADJ YW	YEARLING RATIO	DAILY GAIN ON TEST	% HEREFORD	HOMOZYGOUS BLACK ?
780	867	85	2.62	68%	NO
EPD'S	BW	WW	YW	M	M&G
	+4.6	+45	+69	+15	+38

Lot 26

JN Balder 4126

JN Balder 8079

JN Baldee 079

JN BALDER Y612

Feltons 613

HB002445**JN Baldee 612**

JN Baldee 240

ANIMAL DATA	DOB	ACT BW	ADJ WW	WEANING RATIO	YEARLING SC
	4-13-2011	100	695	114	37
1-15-10 WEIGHT	ADJ YW	YEARLING RATIO	DAILY GAIN ON TEST	% HEREFORD	HOMOZYGOUS BLACK ?
895	1148	113	3.22	72%	YES
EPD'S	BW	WW	YW	M	M&G
	+3.6	+45	+74	+16	+39

*This is one of the younger bulls in this class but is a top performer.***Lot 27**

JN Balder 4126

JN Balder 8079

JN Baldee 079

JN BALDER Y642

Feltons 613

HB002446**JN Baldee 642**

JN Baldee 223

ANIMAL DATA	DOB	ACT BW	ADJ WW	WEANING RATIO	YEARLING SC
	2-25-2011	85	552	90	35
1-15-10 WEIGHT	ADJ YW	YEARLING RATIO	DAILY GAIN ON TEST	% HEREFORD	HOMOZYGOUS BLACK ?
855	952	93	2.90	72%	YES
EPD'S	BW	WW	YW	M	M&G
	+3.5	+45	+71	+17	+39

*This bull is horned.***Lot 28**

Feltons 615

JN Balder 6449

JN Baldee 449

JN BALDER Y702

JN Balder 4130

HB002447**JN Baldee 702**

JN Baldee 240

ANIMAL DATA	DOB	ACT BW	ADJ WW	WEANING RATIO	YEARLING SC
	3-3-2011	89	681	111	39
1-15-10 WEIGHT	ADJ YW	YEARLING RATIO	DAILY GAIN ON TEST	% HEREFORD	HOMOZYGOUS BLACK ?
960	1073	105	2.85	78%	YES
EPD'S	BW	WW	YW	M	M&G
	+3.0	+44	+77	+12	+34

Lot 29

JN Balder 6449

JN Balder 8622

JN Baldee 622

JN BALDER Y719

JN Balder 2903

HB002524**JN Baldee 719**

JN Baldee 449

ANIMAL DATA	DOB	ACT BW	ADJ WW	WEANING RATIO	YEARLING SC
	4-16-2011	91	568	93	33
1-15-10 WEIGHT	ADJ YW	YEARLING RATIO	DAILY GAIN ON TEST	% HEREFORD	HOMOZYGOUS BLACK ?
730	930	91	2.66	76%	NO
EPD'S	BW	WW	YW	M	M&G
	+2.6	+45	+77	+11	+33

This bull is young but don't overlook his potential.

Lot 30Feltons Performer 572
JN Balder 7108 (AMC)
JN Baldee 108 (AMC)**JN BALDER Y736 (AMF)****HB002526**JN Balder 4126
JN Baldee 736
JN Baldee 962

ANIMAL DATA	DOB	ACT BW	ADJ WW	WEANING RATIO	YEARLING SC
	2-28-2011	82	549	90	38
1-15-10 WEIGHT	ADJ YW	YEARLING RATIO	DAILY GAIN ON TEST	% HEREFORD	HOMOZYGOUS BLACK ?
885	1009	99	3.27	68%	YES
EPD'S	BW	WW	YW	M	M&G
	+3.3	+49	+82	+17	+42

*This bull tested clean by DNA analysis.***Lot 31**JN Balder 6449
JN Balder 8622
JN Baldee 622**JN BALDER Y738****HB002527**JN Balder 2903
JN Baldee 738
JN Baldee 206

ANIMAL DATA	DOB	ACT BW	ADJ WW	WEANING RATIO	YEARLING SC
	2-25-2011	84	613	100	37
1-15-10 WEIGHT	ADJ YW	YEARLING RATIO	DAILY GAIN ON TEST	% HEREFORD	HOMOZYGOUS BLACK ?
970	1096	107	3.41	76%	YES
EPD'S	BW	WW	YW	M	M&G
	+2.8	+41	+69	+12	+32

Lot 32JN Balder 4126
JN Balder 8079
JN Baldee 079**JN BALDER Y746****HB002448**Feltons Performer 572
JN Baldee 746
JN Baldee 477

ANIMAL DATA	DOB	ACT BW	ADJ WW	WEANING RATIO	YEARLING SC
	2-23-2011	86	683	112	39
1-15-10 WEIGHT	ADJ YW	YEARLING RATIO	DAILY GAIN ON TEST	% HEREFORD	HOMOZYGOUS BLACK ?
1015	1121	110	3.13	68%	NO
EPD'S	BW	WW	YW	M	M&G
	+4.3	+48	+77	+17	+41



Lot 33

Feltons Langworth 249

JN Balder 4136

JN Baldee 136

JN BALDER Y763

JN Balder 1905

HB002528**JN Baldee 763**

JN Baldee 073

ANIMAL DATA	DOB	ACT BW	ADJ WW	WEANING RATIO	YEARLING SC
	2-21-2011	82	533	87	39
1-15-10 WEIGHT	ADJ YW	YEARLING RATIO	DAILY GAIN ON TEST	% HEREFORD	HOMOZYGOUS BLACK ?
845	933	91	2.90	68%	NO
EPD'S	BW	WW	YW	M	M&G
	+2.1	+47	+76	+11	+34

Lot 34

JN Balder 2903

JN Balder 7312

JN Baldee 312

JN BALDER Y802

JN Balder 1905

HB002449**JN Baldee 802**

JN Baldee 136

ANIMAL DATA	DOB	ACT BW	ADJ WW	WEANING RATIO	YEARLING SC
	3-3-2011	79	603	99	38
1-15-10 WEIGHT	ADJ YW	YEARLING RATIO	DAILY GAIN ON TEST	% HEREFORD	HOMOZYGOUS BLACK ?
915	1041	102	3.13	65%	YES
EPD'S	BW	WW	YW	M	M&G
	+3.5	+45	+73	+13	+36

This bull is a top prospect.

BULLS ON FEED TEST

We test our sale bulls on feed for 90-110 days on a ration designed for a 3 lb. daily gain. Normally a steer would get a hotter ration for at least 120 days. Our purpose is not to fatten our bulls but rather to allow them to express their ability to gain weight on feed. The daily gain on test results will give you a good idea of how the bull's calves will perform in a feedlot.

Lot 35

JN Balder 2903

JN Balder 7312

JN Baldee 312

JN BALDER Y806

Feltons Performer 572

HB002450**JN Baldee 806**

JN Baldee 501

ANIMAL DATA	DOB	ACT BW	ADJ WW	WEANING RATIO	YEARLING SC
	3-3-2011	72	609	100	37
1-15-10 WEIGHT	ADJ YW	YEARLING RATIO	DAILY GAIN ON TEST	% HEREFORD	HOMOZYGOUS BLACK ?
935	1069	105	3.27	74%	NO
EPD'S	BW	WW	YW	M	M&G
	+3.9	+42	+67	+14	+35

**Lot 36**

JN Balder 2903

JN Balder 7312

JN Baldee 312

JN BALDER Y807

JN Balder 6449

HB002451**JN Baldee 807**

JN Baldee 632 (AMF)

ANIMAL DATA	DOB	ACT BW	ADJ WW	WEANING RATIO	YEARLING SC
	3-4-2011	89	600	98	35
1-15-10 WEIGHT	ADJ YW	YEARLING RATIO	DAILY GAIN ON TEST	% HEREFORD	HOMOZYGOUS BLACK ?
900	1023	100	3.04	75%	NO
EPD'S	BW	WW	YW	M	M&G
	+2.3	+42	+67	+16	+37

Lot 37

JN Balder 2903

JN Balder 7312

JN Baldee 312

JN BALDER Y809

JN Balder 4136

HB002452**JN Baldee 809**

JN Baldee 432

ANIMAL DATA	DOB	ACT BW	ADJ WW	WEANING RATIO	YEARLING SC
	3-4-2011	86	563	92	37
1-15-10 WEIGHT	ADJ YW	YEARLING RATIO	DAILY GAIN ON TEST	% HEREFORD	HOMOZYGOUS BLACK ?
920	1069	105	3.55	70%	YES
EPD'S	BW	WW	YW	M	M&G
	+1.8	+41	+64	+12	+33

Lot 38JN Balder 2903
JN Balder 7312
JN Baldee 312**JN BALDER Y810**JN Balder 4136
JN Baldee 810
JN Baldee 488**HB002453**

ANIMAL DATA	DOB	ACT BW	ADJ WW	WEANING RATIO	YEARLING SC
	3-25-2011	88	603	99	35
1-15-10 WEIGHT	ADJ YW	YEARLING RATIO	DAILY GAIN ON TEST	% HEREFORD	HOMOZYGOUS BLACK ?
845	1018	100	2.99	65%	NO
EPD'S	BW	WW	YW	M	M&G
	+2.2	+40	+63	+18	+38

Lot 39JN Balder 2903
JN Balder 7312
JN Baldee 312**JN BALDER Y818**Feltons Performer 572
JN Baldee 818
Baldee 525 (IEF)**HB002454**

ANIMAL DATA	DOB	ACT BW	ADJ WW	WEANING RATIO	YEARLING SC
	3-27-2011	94	632	103	35
1-15-10 WEIGHT	ADJ YW	YEARLING RATIO	DAILY GAIN ON TEST	% HEREFORD	HOMOZYGOUS BLACK ?
830	994	97	2.66	74%	YES
EPD'S	BW	WW	YW	M	M&G
	+3.5	+44	+69	+12	+34

This bull's mother is now a donor cow in our ET program.**Lot 40**JN Balder 2903
JN Balder 7312
JN Baldee 312**JN BALDER Y820**JN Balder 6449
JN Baldee 820
JN Baldee 617**HB002455**

ANIMAL DATA	DOB	ACT BW	ADJ WW	WEANING RATIO	YEARLING SC
	3-8-2011	87	503	82	34
1-15-10 WEIGHT	ADJ YW	YEARLING RATIO	DAILY GAIN ON TEST	% HEREFORD	HOMOZYGOUS BLACK ?
810	941	92	3.13	75%	YES
EPD'S	BW	WW	YW	M	M&G
	+1.7	+42	+69	+18	+39

Lot 41

JN Balder 2903
JN Balder 7312
 JN Baldee 312
 JN Balder 4136
JN Baldee 844
 JN Baldee 451

JN BALDER Y844**HB002456**

ANIMAL DATA	DOB	ACT BW	ADJ WW	WEANING RATIO	YEARLING SC
	3-10-2011	96	616	101	36
1-15-10 WEIGHT	ADJ YW	YEARLING RATIO	DAILY GAIN ON TEST	% HEREFORD	HOMOZYGOUS BLACK ?
940	1099	108	3.41	65%	YES
EPD'S	BW	WW	YW	M	M&G
	+3.9	+40	+63	+16	+36

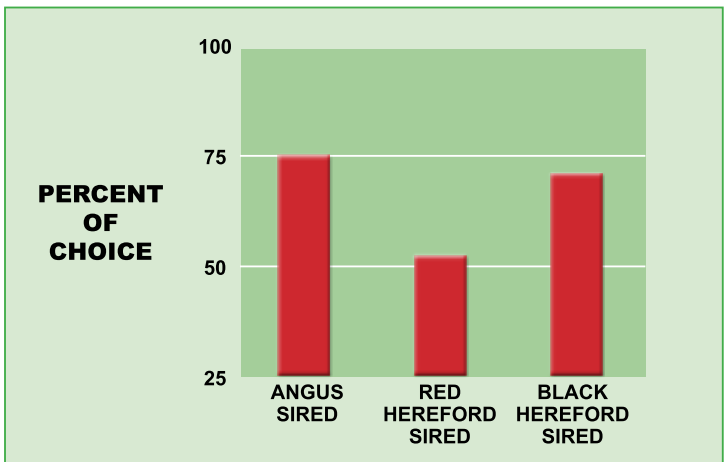
**Lot 42**

JN Balder 2903
JN Balder 7312
 JN Baldee 312
 JN Balder 4136
JN Baldee 856
 JN Baldee 471

JN BALDER Y856**HB002457**

ANIMAL DATA	DOB	ACT BW	ADJ WW	WEANING RATIO	YEARLING SC
	3-6-2011	87	515	84	36
1-15-10 WEIGHT	ADJ YW	YEARLING RATIO	DAILY GAIN ON TEST	% HEREFORD	HOMOZYGOUS BLACK ?
880	1036	102	3.64	65%	YES
EPD'S	BW	WW	YW	M	M&G
	+1.3	+42	+68	+16	+37

This bull is second highest gain on test.



Lot **43**

JN Balder 2903

JN Balder 7312

JN Baldee 312

JN BALDER Y860

Feltons Performer 572

HB002458

JN Baldee 860

JN Baldee 318

ANIMAL DATA	DOB	ACT BW	ADJ WW	WEANING RATIO	YEARLING SC
	4-3-2011	78	652	107	36
1-15-10 WEIGHT	ADJ YW	YEARLING RATIO	DAILY GAIN ON TEST	% HEREFORD	HOMOZYGOUS BLACK ?
870	1082	106	3.08	74%	NO
EPD'S	BW	WW	YW	M	M&G
	+3.5	+48	+78	+15	+39



Lot **44**

JN Balder 6449

JN Balder 9632

JN Baldee 632 (AM)

JN BALDER Y905

JA L1 Domino 524S

HB002459

JN Baldee 905

JAK Ms D P132 S350

ANIMAL DATA	DOB	ACT BW	ADJ WW	WEANING RATIO	YEARLING SC
	2-27-2011	72	541	88	36
1-15-10 WEIGHT	ADJ YW	YEARLING RATIO	DAILY GAIN ON TEST	% HEREFORD	HOMOZYGOUS BLACK ?
885	1009	99	3.31	66%	YES
EPD'S	BW	WW	YW	M	M&G
	+1.3	+25	+43	+8	+21

OUT



Lot 45JN Balder 1905
JN Balder 7130 (AMF)
JN Baldee 130 (AMF)**JN BALDER Y918****HB002460**JN Balder 6038
JN Baldee 918
JN Baldee 475 (IEF)

ANIMAL DATA	DOB	ACT BW	ADJ WW	WEANING RATIO	YEARLING SC
	3-14-2011	91	677	111	37
1-15-10 WEIGHT	ADJ YW	YEARLING RATIO	DAILY GAIN ON TEST	% HEREFORD	HOMOZYGOUS BLACK ?
1020	1213	119	3.74	62%	NO
EPD'S	BW	WW	YW	M	M&G
	+1.5	+46	+72	+17	+40

A low birth weight EPD, yet highest yearling index and highest gain on test.**Lot 46**JN Balder 2903
JN Balder 7312
JN Baldee 312**JN BALDER Y923****HB002461**JN Balder 7108 (AMC)
JN Baldee 923 (AMF)
JN Baldee 734

ANIMAL DATA	DOB	ACT BW	ADJ WW	WEANING RATIO	YEARLING SC
	4-25-2011	85	687	112	36
1-15-10 WEIGHT	ADJ YW	YEARLING RATIO	DAILY GAIN ON TEST	% HEREFORD	HOMOZYGOUS BLACK ?
820	1095	107	2.94	70%	NO
EPD'S	BW	WW	YW	M	M&G
	+2.5	+41	+64	+15	+35



Lot **47**

JN Balder 6449
JN Balder 9630
JN Baldee 630

JN BALDER Y937

HB002462

JN Balder 4136
JN Baldee 937
JN Baldee 414

ANIMAL DATA	DOB	ACT BW	ADJ WW	WEANING RATIO	YEARLING SC
	3-28-2011	74	621	102	34
1-15-10 WEIGHT	ADJ YW	YEARLING RATIO	DAILY GAIN ON TEST	% HEREFORD	HOMOZYGOUS BLACK ?
880	1081	106	3.27	73%	NO
EPD'S	BW	WW	YW	M	M&G
	+3.7	+42	+67	+14	+35

Lot **48**

JN Balder 1905
JN Balder 7130 (AMF)
JN Baldee 130 (AMF)

JN BALDER Y945

HB002463

JN Balder 6449
JN Baldee 945
JN Baldee 535

ANIMAL DATA	DOB	ACT BW	ADJ WW	WEANING RATIO	YEARLING SC
	3-10-2011	84	486	79	36
1-15-10 WEIGHT	ADJ YW	YEARLING RATIO	DAILY GAIN ON TEST	% HEREFORD	HOMOZYGOUS BLACK ?
805	946	93	3.27	72%	NO
EPD'S	BW	WW	YW	M	M&G
	+3.6	+48	+85	+11	+36

Lot **49**

JN Balder 6449
JN Balder 9405
JN Baldee 405

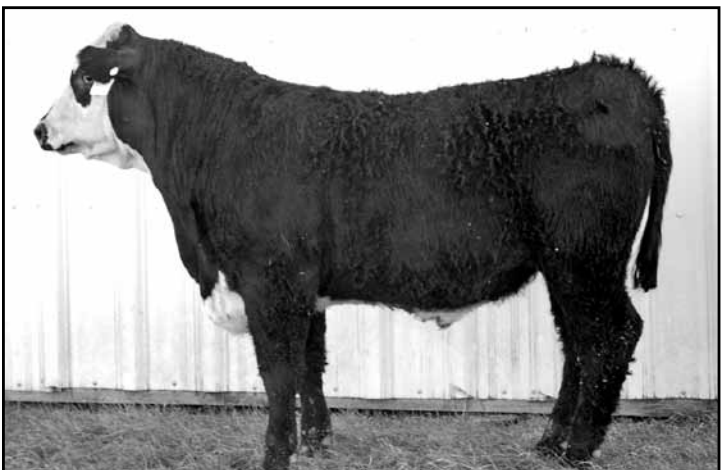
JN BALDER Y952

HB002464

JN Balder 4136
JN Baldee 952
JN Baldee 130 (AMF)

ANIMAL DATA	DOB	ACT BW	ADJ WW	WEANING RATIO	YEARLING SC
	3-5-2011	82	524	86	38
1-15-10 WEIGHT	ADJ YW	YEARLING RATIO	DAILY GAIN ON TEST	% HEREFORD	HOMOZYGOUS BLACK ?
815	932	91	2.94	72%	NO
EPD'S	BW	WW	YW	M	M&G
	+1.1	+45	+76	+18	+40

A good heifer bull.



Lot **50**

JN Balder 6449
JN Balder 9632
JN Baldee 632 (AMF)

JN BALDER Y961

HB002465

JA L1 Domino 3918N
JN Baldee 961
JAK Ms Truman J349

ANIMAL DATA	DOB	ACT BW	ADJ WW	WEANING RATIO	YEARLING SC
	2-15-2011	76	583	95	37
1-15-10 WEIGHT	ADJ YW	YEARLING RATIO	DAILY GAIN ON TEST	% HEREFORD	HOMOZYGOUS BLACK ?
915	991	97	2.94	66%	YES
EPD'S	BW	WW	YW	M	M&G
	+1.3	+25	+43	+8	+21

This would be a good bull to use on heifers.

Lot **51**

JN Balder 6449
JN Balder 9405
JN Baldee 405
JN Balder 7130 (AMF)
JN Baldee 964
JN Baldee 727

JN BALDER Y964

HB002466

ANIMAL DATA	DOB	ACT BW	ADJ WW	WEANING RATIO	YEARLING SC
	3-21-2011	85	632	103	37
1-15-10 WEIGHT	ADJ YW	YEARLING RATIO	DAILY GAIN ON TEST	% HEREFORD	HOMOZYGOUS BLACK ?
900	1077	106	3.18	74%	NO
EPD'S	BW	WW	YW	M	M&G
	+1.8	+47	+83	+14	+38

This would be a good bull to use on heifers.

Lot **52**

JN Balder 6449
JN Balder 9632
JN Baldee 632 (AMF)
JA L1 Domino 315N
JN Baldee 967
JAK Ms 7085 C M N01

JN BALDER Y967

HB002438

ANIMAL DATA	DOB	ACT BW	ADJ WW	WEANING RATIO	YEARLING SC
	2-13-2011	73	540	88	35
1-15-10 WEIGHT	ADJ YW	YEARLING RATIO	DAILY GAIN ON TEST	% HEREFORD	HOMOZYGOUS BLACK ?
900	985	97	3.18	66%	YES
EPD'S	BW	WW	YW	M	M&G
	+1.3	+25	+43	+8	+21

This would be a good bull to use on heifers.



RED HEREFORD BULLS

These bulls are recorded in the ABHA as non-registered bulls. Their performance and pedigree records are maintained for herd evaluation purposes only. No registration certificate is available. Their average daily gain on a 107 day test was 3.29 lbs. The bulls are listed in order by age of their dam. Their average weaning weight was 630 lbs. Their average yearling weight was 1092. There is one horned bull and his horns have been weighted. The rest are polled or have scurs.

Lot **53**

JN BULL Y130

NR/2055

Feltons Langworth 249
JN Balder 4136
 JN Baldee 136

Finks 7243 of 4131 6148(AMC)
JN Baldee 130 (AMF)
 JN Dominet 417 4 ET DOD

ANIMAL DATA	DOB	ACT BW	ADJ WW	WEANING RATIO	YEARLING SC
	2-27-2011	87	700	114	
1-15-10 WEIGHT	ADJ YW	YEARLING RATIO	DAILY GAIN ON TEST	% HEREFORD	HOMOZYGOUS BLACK ?
				62%	NO
EPD'S	BW	WW	YW	M	M&G
	0.8	37	55	20	38

Lot **54**

JN BULL Y326

NR/2040

Feltons 615
JN Balder 6449
 JN Baldee 449

Feltons Langworth 249
JN Baldee 326
 JN Baldee 121

ANIMAL DATA	DOB	ACT BW	ADJ WW	WEANING RATIO	YEARLING SC
	3-29-2011	93	620	101	38
1-15-10 WEIGHT	ADJ YW	YEARLING RATIO	DAILY GAIN ON TEST	% HEREFORD	HOMOZYGOUS BLACK ?
865	1058	97	3.13	88%	NO
EPD'S	BW	WW	YW	M	M&G
	+4.1	+49	+85	+6	+30

Lot **55**

JN BULL Y415

NR/2041

JN Balder 4126
JN Balder 8079
 JN Baldee 079

Feltons Long Ton 205
JN Baldee 415
 JN Baldee 005 (AMF)

ANIMAL DATA	DOB	ACT BW	ADJ WW	WEANING RATIO	YEARLING SC
	3-6-2011	85	611	100	36
1-15-10 WEIGHT	ADJ YW	YEARLING RATIO	DAILY GAIN ON TEST	% HEREFORD	HOMOZYGOUS BLACK ?
970	1132	104	3.64	68%	NO
EPD'S	BW	WW	YW	M	M&G
	+2.8	+47	+77	+18	+41

Lot 56**JN Balder 4136**Feltons Langworth 249
JN Baldee 136**JN BULL Y461**

JN Balder 2903

NR/2056**JN Baldee 461**

HL Diamond Lady 174M

ANIMAL DATA	DOB	ACT BW	ADJ WW	WEANING RATIO	YEARLING SC
	4-19-2011	100	692	113	37
1-15-10 WEIGHT	ADJ YW	YEARLING RATIO	DAILY GAIN ON TEST	% HEREFORD	HOMOZYGOUS BLACK ?
820	1062	97	2.71	78%	NO
EPD'S	BW	WW	YW	M	M&G
	+1.6	+38	+57	+13	+32

Lot 57**JN Balder 8079**

JN Baldee 079

JN BULL Y528

Feltons 620

NR/2042**JN Baldee 528**

JN Baldee 321

ANIMAL DATA	DOB	ACT BW	ADJ WW	WEANING RATIO	YEARLING SC
	2-21-2011	84	622	102	39
1-15-10 WEIGHT	ADJ YW	YEARLING RATIO	DAILY GAIN ON TEST	% HEREFORD	HOMOZYGOUS BLACK ?
895	962	88	2.52	72%	NO
EPD'S	BW	WW	YW	M	M&G
	+4.2	+48	+80	+15	+39

Lot 58**JN Balder 8079**

JN Baldee 079

JN BULL Y531

Feltons Performer 572

NR/2043**JN Baldee 531 (IEF)**

JN Baldee 205

ANIMAL DATA	DOB	ACT BW	ADJ WW	WEANING RATIO	YEARLING SC
	3-2-2011	87	730	119	39
1-15-10 WEIGHT	ADJ YW	YEARLING RATIO	DAILY GAIN ON TEST	% HEREFORD	HOMOZYGOUS BLACK ?
1030	1153	106	3.04	72%	NO
EPD'S	BW	WW	YW	M	M&G
	+5.3	+47	+76	+13	+37

Lot 59**JN Balder 4136**Feltons Langworth 249
JN Baldee 136**JN BULL Y631**

JN Balder 2903

NR/2058**JN Baldee 631**

JN Baldee 326

ANIMAL DATA	DOB	ACT BW	ADJ WW	WEANING RATIO	YEARLING SC
	3-2-2011	85	611	100	37
1-15-10 WEIGHT	ADJ YW	YEARLING RATIO	DAILY GAIN ON TEST	% HEREFORD	HOMOZYGOUS BLACK ?
975	1124	103	3.60	78%	NO
EPD'S	BW	WW	YW	M	M&G
	+2.2	+39	+61	+6	+26

Lot 60**JN Balder 8079**

JN Baldee 079

JN BULL Y637

Feltons 613

NR/2044**JN Baldee 637**

JN Baldee 307

ANIMAL DATA	DOB	ACT BW	ADJ WW	WEANING RATIO	YEARLING SC
	3-15-2011	87	625	102	38
1-15-10 WEIGHT	ADJ YW	YEARLING RATIO	DAILY GAIN ON TEST	% HEREFORD	HOMOZYGOUS BLACK ?
915	1078	99	3.22	72%	NO
EPD'S	BW	WW	YW	M	M&G
	+3.0	+46	+73	+19	+42

Lot 61**JN Balder 6449**Feltons 615
JN Baldee 449**JN BULL Y704**

JN Balder 4130

NR/2045**JN Baldee 704**

JN Baldee 404

ANIMAL DATA	DOB	ACT BW	ADJ WW	WEANING RATIO	YEARLING SC
	2-28-2011	88	559	91	38
1-15-10 WEIGHT	ADJ YW	YEARLING RATIO	DAILY GAIN ON TEST	% HEREFORD	HOMOZYGOUS BLACK ?
905	1034	95	3.37	83%	NO
EPD'S	BW	WW	YW	M	M&G
	+2.5	+44	+77	+12	+34

Lot 62**JN Balder 6449**Feltons 615
JN Baldee 449**JN BULL Y706**

JN Balder 4130

NR/2046**JN Baldee 706**

JN Baldee 241

ANIMAL DATA	DOB	ACT BW	ADJ WW	WEANING RATIO	YEARLING SC
	3-4-2011	87	616	101	38
1-15-10 WEIGHT	ADJ YW	YEARLING RATIO	DAILY GAIN ON TEST	% HEREFORD	HOMOZYGOUS BLACK ?
940	1076	99	3.27	78%	NO
EPD'S	BW	WW	YW	M	M&G
	+2.8	+43	+73	+13	+34

Lot 63**JN Balder 6449**Feltons 615
JN Baldee 449**JN BULL Y709**

JN Balder 4130

NR/2047**JN Baldee 709**

JN Baldee 215

ANIMAL DATA	DOB	ACT BW	ADJ WW	WEANING RATIO	YEARLING SC
	3-10-2011	84	644	105	37
1-15-10 WEIGHT	ADJ YW	YEARLING RATIO	DAILY GAIN ON TEST	% HEREFORD	HOMOZYGOUS BLACK ?
975	1142	105	3.51	78%	NO
EPD'S	BW	WW	YW	M	M&G
	+2.4	+41	+66	+13	+33

Lot 64

Feltons Langworth 249

JN Balder 4136

JN Baldee 136

JN BULL Y721

JN Balder 4130

NR/2059**JN Baldee 721**

JN Baldee 308

ANIMAL DATA	DOB	ACT BW	ADJ WW	WEANING RATIO	YEARLING SC
	3-1-2011	93	654	107	39
1-15-10 WEIGHT	ADJ YW	YEARLING RATIO	DAILY GAIN ON TEST	% HEREFORD	HOMOZYGOUS BLACK ?
1080	1258	115	4.15	72%	NO
EPD'S	BW	WW	YW	M	M&G
	+2.2	+39	+60	+9	+28

Lot 65

Bar JZ Tradition 434V

EFBeef Sch-Lar Proficient N093

Gerber 117F Dixie 009K

JN BULL Y911

JN Balder 1618

NR/2062**JN Baldee 911**

JN Baldee 449

ANIMAL DATA	DOB	ACT BW	ADJ WW	WEANING RATIO	YEARLING SC
	2-10-2011	77	567	93	33
1-15-10 WEIGHT	ADJ YW	YEARLING RATIO	DAILY GAIN ON TEST	% HEREFORD	HOMOZYGOUS BLACK ?
905	1027	94	3.27	88%	NO
EPD'S	BW	WW	YW	M	M&G
	+1.8	+54	+84	+21	+48

This would be a good bull to use on heifers.

BRED HEIFERS SPRING CALVING

These heifers begin calving on March 1st. 7312 is the primary bull we used on our heifers. He is homozygous black so the calves out of these heifers will be black.

Lot 66

Feltons Langworth 249

JN Balder 4136

JN Baldee 136

JN BALDEE 1004

Feltons 620

HB001918**JN Baldee 528**

JN Baldee 321

ANIMAL DATA	DOB	ACT BW	ADJ WW	WEANING RATIO	YEARLING SC
	2-13-2010	64	467	85	N/A
1-15-10 WEIGHT	ADJ YW	YEARLING RATIO	DAILY GAIN ON TEST	% HEREFORD	HOMOZYGOUS BLACK ?
N/A	647	79	N/A	78%	NO
EPD'S	BW	WW	YW	M	M&G
	+2.2	+41	+64	+9	+30

This heifer is bred to 7312.

Lot 67JN Balder 1905
JN Balder 7130 (AMF)
JN Baldee 130 (AMF)**JN BALDEE 1009****HB001872**JN Balder 4136
JN Baldee 810
JN Baldee 488

ANIMAL DATA	DOB	ACT BW	ADJ WW	WEANING RATIO	YEARLING SC
	2-17-2010	68	490	89	N/A
1-15-10 WEIGHT	ADJ YW	YEARLING RATIO	DAILY GAIN ON TEST	% HEREFORD	HOMOZYGOUS BLACK ?
N/A	798	97	N/A	62%	NO
EPD'S	BW	WW	YW	M	M&G
	+2.9	+47	+79	+16	+39

*She is bred to 7312.***Lot 68**JN Balder 1974
JN Balder 6000
EB Selkirk Lass 0007**JN BALDEE 1013****HB001928**JN Balder 1905
JN Baldee 610
JN Baldee 969

ANIMAL DATA	DOB	ACT BW	ADJ WW	WEANING RATIO	YEARLING SC
	2-18-2010	82	492	89	N/A
1-15-10 WEIGHT	ADJ YW	YEARLING RATIO	DAILY GAIN ON TEST	% HEREFORD	HOMOZYGOUS BLACK ?
N/A	852	104	N/A	75%	NO
EPD'S	BW	WW	YW	M	M&G
	+4.5	+49	+76	+9	+34

*This heifer is bred to 7312.***Lot 69**JN Balder 1905
JN Balder 7130 (AMF)
JN Baldee 130 (AMF)**JN BALDEE 1026****HB001878**JN Balder 4136
JN Baldee 826
JN Baldee 405

ANIMAL DATA	DOB	ACT BW	ADJ WW	WEANING RATIO	YEARLING SC
	2-23-2010	75	467	85	N/A
1-15-10 WEIGHT	ADJ YW	YEARLING RATIO	DAILY GAIN ON TEST	% HEREFORD	HOMOZYGOUS BLACK ?
N/A	865	105	N/A	68%	NO
EPD'S	BW	WW	YW	M	M&G
	+2.5	+47	+79	+13	+36

*This heifer is bred to Turning Point.***Lot 70**Feltons Langworth 249
JN Balder 4136
JN Baldee 136**JN BALDEE 1029****HB001915**JAK Double Take L417
JN Baldee 494
DS 552 L1 Domet 9021

ANIMAL DATA	DOB	ACT BW	ADJ WW	WEANING RATIO	YEARLING SC
	2-23-2010	86	457	83	N/A
1-15-10 WEIGHT	ADJ YW	YEARLING RATIO	DAILY GAIN ON TEST	% HEREFORD	HOMOZYGOUS BLACK ?
N/A	778	95	N/A	62%	NO
EPD'S	BW	WW	YW	M	M&G
	+3.8	+42	+65	+11	+32

This heifer is bred to Turning Point.

Lot 71JN Balder 1905
JN Balder 7130 (AMF)
JN Baldee 130 (AMF)**JN BALDEE 1032**Feltons Performer 572
JN Baldee 852
JN Baldee 328**HB001884**

ANIMAL DATA	DOB	ACT BW	ADJ WW	WEANING RATIO	YEARLING SC
	2-24-2010	74	459	83	N/A
1-15-10 WEIGHT	ADJ YW	YEARLING RATIO	DAILY GAIN ON TEST	% HEREFORD	HOMOZYGOUS BLACK ?
N/A	719	87	N/A	72%	NO
EPD'S	BW	WW	YW	M	M&G
	+3.5	+47	+78	+11	+35

*This heifer is bred to Turning Point.***Lot 72**Feltons Langworth 249
JN Balder 4136
JN Baldee 136**JN BALDEE 1036**JN Balder 2903
JN Baldee 727
JN Baldee 135 (IEF)**HB001944**

ANIMAL DATA	DOB	ACT BW	ADJ WW	WEANING RATIO	YEARLING SC
	2-26-2010	82	391	71	N/A
1-15-10 WEIGHT	ADJ YW	YEARLING RATIO	DAILY GAIN ON TEST	% HEREFORD	HOMOZYGOUS BLACK ?
N/A	651	79	N/A	72%	NO
EPD'S	BW	WW	YW	M	M&G
	+1.2	+38	+57	+12	+31

*This heifer is bred to Turning Point. She has been de-horned.***Lot 73**JN Balder 6449
JN Balder 8622
JN Baldee 622**JN BALDEE 1039**JN Balder 1905
JN Baldee 832
JN Baldee 429**HB001880**

ANIMAL DATA	DOB	ACT BW	ADJ WW	WEANING RATIO	YEARLING SC
	2-26-2010	84	518	94	N/A
1-15-10 WEIGHT	ADJ YW	YEARLING RATIO	DAILY GAIN ON TEST	% HEREFORD	HOMOZYGOUS BLACK ?
NA	911	111	N/A	73%	NO
EPD'S	BW	WW	YW	M	M&G
	+3.7	+51	+90	+9	+35

*This heifer is bred to Turning Point.***Lot 74**Feltons Langworth 249
JN Balder 4136
JN Baldee 136**JN BALDEE 1052**Feltons Long Ton 205
JN Baldee 405
JN Baldee 955**HB001905**

ANIMAL DATA	DOB	ACT BW	ADJ WW	WEANING RATIO	YEARLING SC
	3-3-2010	74	530	96	N/A
1-15-10 WEIGHT	ADJ YW	YEARLING RATIO	DAILY GAIN ON TEST	% HEREFORD	HOMOZYGOUS BLACK ?
N/A	828	101	N/A	75%	NO
EPD'S	BW	WW	YW	M	M&G
	+1.5	+45	+72	+13	+36

This heifer is bred to Turning Point.

Lot 75**JN Balder 4136**Feltons Langworth 249
JN Baldee 136**JN BALDEE 1063**

JN Balder 2903

HB001921**JN Baldee 539**

JN Baldee 317

ANIMAL DATA	DOB	ACT BW	ADJ WW	WEANING RATIO	YEARLING SC
	3-5-2010	76	466	84	N/A
1-15-10 WEIGHT	ADJ YW	YEARLING RATIO	DAILY GAIN ON TEST	% HEREFORD	HOMOZYGOUS BLACK ?
N/A	769	94	N/A	72%	NO
EPD'S	BW	WW	YW	M	M&G
	+0.7	+34	+48	+10	+27

*This heifer is bred to 7312.***Lot 76****JN Balder 7108 (AMC)**Feltons Performer 572
JN Baldee 108 (AMC)**JN BALDEE 1066 (AMF)**

Feltons Langworth 249

HB001901**JN Baldee 326**

JN Baldee 121

ANIMAL DATA	DOB	ACT BW	ADJ WW	WEANING RATIO	YEARLING SC
	3-6-2010	88	526	95	N/A
1-15-10 WEIGHT	ADJ YW	YEARLING RATIO	DAILY GAIN ON TEST	% HEREFORD	HOMOZYGOUS BLACK ?
N/A	848	103	N/A	82%	NO
EPD'S	BW	WW	YW	M	M&G
	+4.4	+48	+80	+9	+33

*She is bred to 7312. DNA tested clean.***Lot 77****JN Balder 1905**Feltons Langworth 249
JN Baldee 905**JN BALDEE 1070**

Feltons Performer 572

HB001866**JN Baldee 730**

JN Baldee 136

ANIMAL DATA	DOB	ACT BW	ADJ WW	WEANING RATIO	YEARLING SC
	3-7-2010	84	539	98	N/A
1-15-10 WEIGHT	ADJ YW	YEARLING RATIO	DAILY GAIN ON TEST	% HEREFORD	HOMOZYGOUS BLACK ?
NA	823	100	N/A	75%	NO
EPD'S	BW	WW	YW	M	M&G
	+4.3	+55	+90	+6	+33

*This heifer is bred to 7312. She has been de-horned.***Lot 78****JN Balder 6000**JN Balder 1974
EB Selkirk Lass 0007**JN BALDEE 1007**

JN Balder 1905

HX001300**JN Baldee 517**

JN Baldee 033

ANIMAL DATA	DOB	ACT BW	ADJ WW	WEANING RATIO	YEARLING SC
	2-16-2010	84	454	82	N/A
1-15-10 WEIGHT	ADJ YW	YEARLING RATIO	DAILY GAIN ON TEST	% HEREFORD	HOMOZYGOUS BLACK ?
N/A	743	90	N/A	75%	NO
EPD'S	BW	WW	YW	M	M&G
	+3.6	+46	+68	+8	+31

This red heifer was bred to 7312.

Lot 79**JN Balder 7108 (AMC)**
Feltons Performer 572
JN Baldee 108 (AMC)**JN BALDEE 1008 (AMF)**

JN Balder 1905

HX001301**JN Baldee 606**

JN Baldee 977

ANIMAL DATA	DOB	ACT BW	ADJ WW	WEANING RATIO	YEARLING SC
	2-16-2010	95	561	102	N/A
1-15-10 WEIGHT	ADJ YW	YEARLING RATIO	DAILY GAIN ON TEST	% HEREFORD	HOMOZYGOUS BLACK ?
N/A	911	111	N/A	68%	NO
EPD'S	BW	WW	YW	M	M&G
	+3.9	+52	+87	+13	+39

*This red heifer is bred to 7312. She tested clean by DNA exam.***Lot 80****JN Balder 1905**
Feltons Langworth 249
JN Baldee 905**JN BALDEE 1018**

E E 740 L1 0279

HX001292**JN Baldee 471**

E E 819 Ms Pride 037

ANIMAL DATA	DOB	ACT BW	ADJ WW	WEANING RATIO	YEARLING SC
	2-21-2010	80	408	74	N/A
1-15-10 WEIGHT	ADJ YW	YEARLING RATIO	DAILY GAIN ON TEST	% HEREFORD	HOMOZYGOUS BLACK ?
N/A	N/A	N/A	N/A	62%	NO
EPD'S	BW	WW	YW	M	M&G
	+4.5	+57	+100	+9	+37

*This red heifer is bred to 7312.***Lot 81****JN Balder 4136**
Feltons Langworth 249
JN Baldee 136**JN BALDEE 1023**

Feltons Performer 572

HX001302**JN Baldee 608 (AMF)**

JN Baldee 010

ANIMAL DATA	DOB	ACT BW	ADJ WW	WEANING RATIO	YEARLING SC
	2-22-2010	68	410	74	N/A
1-15-10 WEIGHT	ADJ YW	YEARLING RATIO	DAILY GAIN ON TEST	% HEREFORD	HOMOZYGOUS BLACK ?
N/A	689	84	N/A	75%	NO
EPD'S	BW	WW	YW	M	M&G
	+2.6	+38	+53	+10	+29

*This red heifer is bred to 7312.***Lot 82****JN Balder 4136**
Feltons Langworth 249
JN Baldee 136**JN BALDEE 1028**

JN Balder 1618

HX001296**JN Baldee 306**

JN Baldee 077

ANIMAL DATA	DOB	ACT BW	ADJ WW	WEANING RATIO	YEARLING SC
	2-23-2010	82	547	99	N/A
1-15-10 WEIGHT	ADJ YW	YEARLING RATIO	DAILY GAIN ON TEST	% HEREFORD	HOMOZYGOUS BLACK ?
N/A	840	102	N/A	68%	NO
EPD'S	BW	WW	YW	M	M&G
	+2.1	+41	+63	+14	+35

This red heifer is bred to 7312.

Lot 83**JN Balder 6449**
Feltons 615
JN Baldee 449**JN BALDEE 1038****HX001290****JN Baldee 135 (IEF)**
Feltons Long Ton 205
JN Baldee 980

ANIMAL DATA	DOB	ACT BW	ADJ WW	WEANING RATIO	YEARLING SC
	2-27-2010	84	587	106	N/A
1-15-10 WEIGHT	ADJ YW	YEARLING RATIO	DAILY GAIN ON TEST	% HEREFORD	HOMOZYGOUS BLACK ?
N/A	847	103	N/A	82%	NO
EPD'S	BW	WW	YW	M	M&G
	+1.9	+48	+82	+19	+43

*This red heifer is bred to 7312.***Lot 84****JN Balder 4136**
Feltons Langworth 249
JN Baldee 136**JN BALDEE 1043****HX001299****JN Baldee 461**
JN Balder 2903
HL Diamond Lady 174M

ANIMAL DATA	DOB	ACT BW	ADJ WW	WEANING RATIO	YEARLING SC
	3-1-2010	80	546	99	N/A
1-15-10 WEIGHT	ADJ YW	YEARLING RATIO	DAILY GAIN ON TEST	% HEREFORD	HOMOZYGOUS BLACK ?
N/A	821	100	N/A	78%	NO
EPD'S	BW	WW	YW	M	M&G
	+1.6	+38	+57	+13	+32

*JN Baldee 1043 is bred to 7312.***Lot 85****JN Balder 4136**
Feltons Langworth 249
JN Baldee 136**JN BALDEE 1051****HX001297****JN Baldee 314**
JN Balder 1618
JN Baldee 030

ANIMAL DATA	DOB	ACT BW	ADJ WW	WEANING RATIO	YEARLING SC
	3-3-2010	86	535	97	N/A
1-15-10 WEIGHT	ADJ YW	YEARLING RATIO	DAILY GAIN ON TEST	% HEREFORD	HOMOZYGOUS BLACK ?
N/A	818	100	N/A	68%	NO
EPD'S	BW	WW	YW	M	M&G
	+2.0	+39	+57	+14	+34

*This red heifer is bred to 7312.***Lot 86****JN Balder 6000**
JN Balder 1974
EB Selkirk Lass 0007**JN BALDEE 1064****HX001298****JN Baldee 321**
JN Baldee 1905
JN Baldee 029

ANIMAL DATA	DOB	ACT BW	ADJ WW	WEANING RATIO	YEARLING SC
	3-6-2010	94	525	95	N/A
1-15-10 WEIGHT	ADJ YW	YEARLING RATIO	DAILY GAIN ON TEST	% HEREFORD	HOMOZYGOUS BLACK ?
N/A	776	94	N/A	75%	NO
EPD'S	BW	WW	YW	M	M&G
	+2.7	+47	+71	+11	+35

She is a red heifer bred to 7312.

Lot **87**

Feltons 615
JN Balder 6449
JN Baldee 449

JN BALDEE 1075

HX001293

Moser 411 of 098 Ambush
JN Baldee 561 (AMF)
Triple R Miss 2035

ANIMAL DATA	DOB	ACT BW	ADJ WW	WEANING RATIO	YEARLING SC
	3-16-2010	78	523	95	N/A
1-15-10 WEIGHT	ADJ YW	YEARLING RATIO	DAILY GAIN ON TEST	% HEREFORD	HOMOZYGOUS BLACK ?
N/A	798	97	N/A	69%	NO
EPD'S	BW	WW	YW	M	M&G
	+1.8	+41	+65	+16	+37

This red heifer is bred to 7312.

Lot **88**

Feltons Langworth 249
JN Balder 1905
JN Baldee 905

JN BALDEE 1087

HX001291

JAK L1 Domino L 377
JN Baldee 444
JAK Ms Montana D38

ANIMAL DATA	DOB	ACT BW	ADJ WW	WEANING RATIO	YEARLING SC
	3-14-2010	81	601	109	N/A
1-15-10 WEIGHT	ADJ YW	YEARLING RATIO	DAILY GAIN ON TEST	% HEREFORD	HOMOZYGOUS BLACK ?
N/A	947	115	N/A	62%	NO
EPD'S	BW	WW	YW	M	M&G
	+3.2	+51	+81	+7	+32

This red heifer is bred to 7312.

FALL CALVING COWS

These cows were open last spring and have been bred to calve next fall to either 7312 or Turning Point.



Lot **89**

Vermilion George 7337
Vermilion 7337 George 3976
Vermilion C L 9309

JN BALDEE 965

NR/1090

GK Encore 609 R
SR Lady Encore 7154
SR Miss Mark Dom 2619

ANIMAL DATA	DOB	ACT BW	ADJ WW	WEANING RATIO	YEARLING SC
	2-20-1999	N/A	N/A	N/A	N/A
1-15-10 WEIGHT	ADJ YW	YEARLING RATIO	DAILY GAIN ON TEST	% HEREFORD	HOMOZYGOUS BLACK ?
N/A	N/A	N/A	N/A	50%	NO
EPD'S	BW	WW	YW	M	M&G
	4.1	47	77	28	52

This F1 cow is bred to JN Balder 7312, for a fall calf.

Lot 90CL 1 Domino 185
JN Domino 4036B 4 ET
TRC Miss Domino 1036**JN BALDEE 312**

Vermilion 7337 George 3976

HB000099**JN Baldee 073**

SR Lady Mark 6155

ANIMAL DATA	DOB	ACT BW	ADJ WW	WEANING RATIO	YEARLING SC
	2-25-2003	85	505	97	N/A
1-15-10 WEIGHT	ADJ YW	YEARLING RATIO	DAILY GAIN ON TEST	% HEREFORD	HOMOZYGOUS BLACK ?
N/A	N/A	N/A	N/A	75%	NO
EPD'S	BW	WW	YW	M	M&G
	+1.4	+41	+62	+24	+45

JN Baldee 312 is a dehorned cow, she is the dam of 7312 one of our herd bulls. Bred for a fall calf to Turning Point.

Lot 91JN Domino 4036B 4ET
JN Balder 1618
BJH Brax Rose 9618**JN BALDEE 314**

JN Domino 4794E 4ET

HB000101**JN Baldee 030**

AVF Mayflower 2674

ANIMAL DATA	DOB	ACT BW	ADJ WW	WEANING RATIO	YEARLING SC
	2-26-2003	70	514	98	N/A
1-15-10 WEIGHT	ADJ YW	YEARLING RATIO	DAILY GAIN ON TEST	% HEREFORD	HOMOZYGOUS BLACK ?
N/A	N/A	N/A	N/A	62%	NO
EPD'S	BW	WW	YW	M	M&G
	+2.9	+38	+54	+19	+37

JN Baldee 314 is a dehorned cow, bred to 7312 for a fall calf.

Lot 92Feltons Langworth 249
JN Balder 1905
JN Baldee 905**JN BALDEE 321**

JN Domino 4794E 4ET

HB000110**JN Baldee 029**

AVF Drakkar Edelta 2684

ANIMAL DATA	DOB	ACT BW	ADJ WW	WEANING RATIO	YEARLING SC
	2-27-2003	80	535	102	N/A
1-15-10 WEIGHT	ADJ YW	YEARLING RATIO	DAILY GAIN ON TEST	% HEREFORD	HOMOZYGOUS BLACK ?
N/A	N/A	N/A	N/A	62%	N/A
EPD'S	BW	WW	YW	M	M&G
	+2.6	+51	+84	+6	+32

JN Baldee 321 is a dehorned cow, bred to 7312 for a fall calf.

Lot 93Feltons Endurance 745
Feltons Long Ton 205
Feltons Kate J47**JN BALDEE 405**

Vermilion George 7337

HB000129**JN Baldee 955**

SR Lady 335 J 2123

ANIMAL DATA	DOB	ACT BW	ADJ WW	WEANING RATIO	YEARLING SC
	2-21-2004	80	590	112	N/A
1-15-10 WEIGHT	ADJ YW	YEARLING RATIO	DAILY GAIN ON TEST	% HEREFORD	HOMOZYGOUS BLACK
N/A	717	103	N/A	75%	NO
EPD'S	BW	WW	YW	M	M&G
	+1.8	+49	+84	+17	+42

JN Baldee 405 is a polled cow, bred for a fall calf to 7312. She is dam of our bull 9405.

Lot **94**

BJH Balder 7504
JN Balder 2903
JN Baldee 903

JN BALDEE 461

HB000298

HL Mr Diamond 34H
HL Diamond Lady 174M
HL Domino Lady 40H

ANIMAL DATA	DOB	ACT BW	ADJ WW	WEANING RATIO	YEARLING SC
	3-31-2004	75	N/A	N/A	N/A
1-15-10 WEIGHT	ADJ YW	YEARLING RATIO	DAILY GAIN ON TEST	% HEREFORD	HOMOZYGOUS BLACK ?
N/A	N/A	N/A	N/A	81%	N/A
EPD'S	BW	WW	YW	M	M&G
	+2.0	+36	+54	+16	+34

JN Baldee 461 is a polled cow, bred to 7312 for a fall calf.

Lot **95**

JAK L1 Domino H376
JAK L1 Domino L45
JAK L1 Dominet 1160

JN BALDEE 488

NR/1286

Molitor Due 2518
Patrys 348 548 131
Molitor 371 Ella 0115

ANIMAL DATA	DOB	ACT BW	ADJ WW	WEANING RATIO	YEARLING SC
	3-25-2004	N/A	N/A	N/A	N/A
1-15-10 WEIGHT	ADJ YW	YEARLING RATIO	DAILY GAIN ON TEST	% HEREFORD	HOMOZYGOUS BLACK ?
N/A	N/A	N/A	N/A	50%	NO
EPD'S	BW	WW	YW	M	M&G
	2.1	48	81	30	54

She is an F1, bred to 7312 for a fall calf.

Lot **96**

Feltons Long Ton 205
JN Balder 1974
JN Baldee 974 (IEF)

JN BALDEE 507

HB000257

Vermilion 7337 George 3976
JN Baldee 054
SR Lady Time 0141

ANIMAL DATA	DOB	ACT BW	ADJ WW	WEANING RATIO	YEARLING SC
	2-21-2005	85	564	98	N/A
1-15-10 WEIGHT	ADJ YW	YEARLING RATIO	DAILY GAIN ON TEST	% HEREFORD	HOMOZYGOUS BLACK
N/A	N/A	N/A	N/A	62%	N/A
EPD'S	BW	WW	YW	M	M&G
	+0.5	+40	+56	+23	+43

JN Baldee 507 is a polled cow, bred to 7312 for a fall calf.

Lot **97**

BJH Balder 7504
JN Balder 2906
JN Baldee 906

JN BALDEE 625

HB000371

Feltons Long Ton 205
JN Baldee 221
JN Baldee 053

ANIMAL DATA	DOB	ACT BW	ADJ WW	WEANING RATIO	YEARLING SC
	3-7-2006	80	401	79	N/A
1-15-10 WEIGHT	ADJ YW	YEARLING RATIO	DAILY GAIN ON TEST	% HEREFORD	HOMOZYGOUS BLACK N/A
N/A	N/A	NA	N/A	68%	N/A
EPD'S	BW	WW	YW	M	M&G
	+3.7	+33	+40	+15	+32

JN Baldee 625 is a polled cow, bred to 7312 for a fall calf.

Lot 98**JN Balder 4130**Feltons Langworth 249
JN Baldee 130 (AMF)**JN BALDEE 702**

BJH Balder 7504

HB000504**JN Baldee 240**

JN Baldee 955

ANIMAL DATA	DOB	ACT BW	ADJ WW	WEANING RATIO	YEARLING SC
	2-17-2007	80	460	83	N/A
1-15-10 WEIGHT	ADJ YW	YEARLING RATIO	DAILY GAIN ON TEST	% HEREFORD	HOMOZYGOUS BLACK ?
N/A	N/A	N/A	N/A	68%	N/A
EPD'S	BW	WW	YW	M	M&G
	+3.2	+37	+59	+10	+29

*JN Baldee 702 is bred to 7312 for a fall calf.***Lot 99****JN Balder 4136**

Feltons Langworth 249

JN Baldee 136

JN BALDEE 856

E E 740 L1 0279

HB000880**JN Baldee 471**

E E 819 Ms Pride 037

ANIMAL DATA	DOB	ACT BW	ADJ WW	WEANING RATIO	YEARLING SC
	3-14-2008	78	595	108	N/A
1-15-10 WEIGHT	ADJ YW	YEARLING RATIO	DAILY GAIN ON TEST	% HEREFORD	HOMOZYGOUS BLACK ?
N/A	833	115	N/A	62%	N/A
EPD'S	BW	WW	YW	M	M&G
	+1.4	+49	+86	+16	+41

*She is bred to 7312 for a fall calf.***Lot 100****JN Balder 1618**

JN Domino 4036B 4ET

BJH Brax Rose 9618

JN BALDEE 911

JN Balder 1905

HB001228**JN Baldee 449**

JN Baldee 110

ANIMAL DATA	DOB	ACT BW	ADJ WW	WEANING RATIO	YEARLING SC
	2-20-2009	77	550	94	N/A
1-15-10 WEIGHT	ADJ YW	YEARLING RATIO	DAILY GAIN ON TEST	% HEREFORD	HOMOZYGOUS BLACK ?
N/A	743	100	N/A	75%	N/A
EPD'S	BW	WW	YW	M	M&G
	+2.7	+50	+84	+14	+39

*JN Baldee 911 is a polled cow, bred to 7312 for a fall calf.***Lot 101****JN Balder 7108 (AMC)**

Feltons Performer 572

JN Baldee 108 (AMC)

JN BALDEE 921 (AMF)

JN Balder 4130

HB001286**JN Baldee 724**

JN Baldee 461

ANIMAL DATA	DOB	ACT BW	ADJ WW	WEANING RATIO	YEARLING SC
	2-26-2009	77	554	94	N/A
1-15-10 WEIGHT	ADJ YW	YEARLING RATIO	DAILY GAIN ON TEST	% HEREFORD	HOMOZYGOUS BLACK ?
N/A	645	87	N/A	76%	N/A
EPD'S	BW	WW	YW	M	M&G
	+3.3	+39	+57	+16	+36

She is bred to Turning Point for a fall calf.

Lot 102

Feltons Langworth 249

JN Balder 4136

JN Baldee 136

JN BALDEE 924

JN Balder 1618

HB001211**JN Baldee 314**

JN Baldee 030

ANIMAL DATA	DOB	ACT BW	ADJ WW	WEANING RATIO	YEARLING SC
	2-26-2009	68	529	90	N/A
I-15-10 WEIGHT	ADJ YW	YEARLING RATIO	DAILY GAIN ON TEST	% HEREFORD	HOMOZYGOUS BLACK
N/A	620	83	N/A	68%	N/A
EPD'S	BW	WW	YW	M	M&G
	+0.4	+35	+45	+14	+32

*Bred for a fall calf to Turning Point.***Lot 103**

Feltons 615

JN Balder 6449

JN Baldee 449

JN BALDEE 956

Feltons 613

HB001268**JN Baldee 617**

JN Baldee 138

ANIMAL DATA	DOB	ACT BW	ADJ WW	WEANING RATIO	YEARLING SC
	3-10-2009	72	639	109	N/A
I-15-10 WEIGHT	ADJ YW	YEARLING RATIO	DAILY GAIN ON TEST	% HEREFORD	HOMOZYGOUS BLACK ?
N/A	832	112	N/A	82%	N/A
EPD'S	BW	WW	YW	M	M&G
	+1.1	+50	+88	+19	+44

JN Baldee 956 is a polled cow, bred to 7312 for a fall calf.

FALL CALVING BRED HEIFERS

Lot 104

JN Balder 1974

JN Balder 6000

EB Selkirk Lass 0007

JN BALDEE 1019

JN Balder 1905

HB001951**JN Baldee 778**

JN Baldee 038

ANIMAL DATA	DOB	ACT BW	ADJ WW	WEANING RATIO	YEARLING SC
	2-21-2010	74	478	87	N/A
I-15-10 WEIGHT	ADJ YW	YEARLING RATIO	DAILY GAIN ON TEST	% HEREFORD	HOMOZYGOUS BLACK ?
N/A	790	96	N/A	75%	N/A
EPD'S	BW	WW	YW	M	M&G
	+3.0	+47	+70	+13	+37

JN Baldee 1019 is bred to Turning Point for a fall calf.

Lot 105**JN Balder 1905**Feltons Langworth 249
JN Baldee 905**JN BALDEE 1020**

E E 740 L1 0279

HB001850**JN Baldee 472**

E E Blackbird 5072

ANIMAL DATA	DOB	ACT BW	ADJ WW	WEANING RATIO	YEARLING SC
	2-22-2010	90	625	113	N/A
1-15-10 WEIGHT	ADJ YW	YEARLING RATIO	DAILY GAIN ON TEST	% HEREFORD	HOMOZYGOUS BLACK
N/A	611	110	N/A	62%	NO
EPD'S	BW	WW	YW	M	M&G
	+4.4	+56	+97	+8	+36

*Bred for a fall calf to Turning Point.***Lot 106****JN Balder 4136**

Feltons Langworth 249

JN Baldee 136

JN BALDEE 1021

JN Domino 4794E 4ET

HB001892**JN Baldee 040**

AVF Erica Parks 654

ANIMAL DATA	DOB	ACT BW	ADJ WW	WEANING RATIO	YEARLING SC
	2-22-2010	84	535	97	N/A
1-15-10 WEIGHT	ADJ YW	YEARLING RATIO	DAILY GAIN ON TEST	% HEREFORD	HOMOZYGOUS BLACK ?
N/A	847	103	N/A	62%	NO
EPD'S	BW	WW	YW	M	M&G
	+3.3	+42	+64	+14	+35

*JN Baldee 1021 is bred to 7312.***Lot 107****JN Balder 6449**

Feltons 615

JN Baldee 449

JN BALDEE 1027

JN Domino 4794E 4ET

HB001837**JN Baldee 026**

AVF Erica 784

ANIMAL DATA	DOB	ACT BW	ADJ WW	WEANING RATIO	YEARLING SC
	2-23-2010	98	517	94	N/A
1-15-10 WEIGHT	ADJ YW	YEARLING RATIO	DAILY GAIN ON TEST	% HEREFORD	HOMOZYGOUS BLACK ?
N/A	844	103	N/A	69%	NO
EPD'S	BW	WW	YW	M	M&G
	+3.8	+47	+84	+16	+39

*JN Baldee 1027 is bred to 7312 for a fall calf.***Lot 108****JN Balder 7108 (AMC)**

Feltons Performer 572

JN Baldee 108 (AMC)

JN BALDEE 1040 (AMF)

Feltons 613

HB001934**JN Baldee 642**

JN Baldee 223

ANIMAL DATA	DOB	ACT BW	ADJ WW	WEANING RATIO	YEARLING SC
	2-28-2010	88	564	102	N/A
1-15-10 WEIGHT	ADJ YW	YEARLING RATIO	DAILY GAIN ON TEST	% HEREFORD	HOMOZYGOUS BLACK
N/A	886	108	N/A	78%	NO
EPD'S	BW	WW	YW	M	M&G
	+2.7	+43	+66	+16	+38

Bred for a fall calf to Turning Point.

Lot 109

Feltons 615
JN Balder 6449
 JN Baldee 449
 JAK L1 Domino L45
JN Baldee 488
 Patrys 348 549-131

JN BALDEE 1059**HB001857**

ANIMAL DATA	DOB	ACT BW	ADJ WW	WEANING RATIO	YEARLING SC
	3-4-2010	74	595	108	N/A
1-15-10 WEIGHT	ADJ YW	YEARLING RATIO	DAILY GAIN ON TEST	% HEREFORD	HOMOZYGOUS BLACK ?
N/A	898	109	N/A	69%	NO
EPD'S	BW	WW	YW	M	M&G
	+2.5	+49	+88	+22	+47

*JN Baldee 1059 is bred to Turning Point for a fall calf.***Lot 110**

Feltons Langworth 249
JN Balder 1905
 JN Baldee 905
 E E 394 Hy Trend 819
JN Baldee 473
 E E Ms 307 L1 6156

JN BALDEE 1061**HB001851**

ANIMAL DATA	DOB	ACT BW	ADJ WW	WEANING RATIO	YEARLING SC
	3-4-2010	76	611	111	N/A
1-15-10 WEIGHT	ADJ YW	YEARLING RATIO	DAILY GAIN ON TEST	% HEREFORD	HOMOZYGOUS BLACK ?
N/A	594	106	N/A	62%	NO
EPD'S	BW	WW	YW	M	M&G
	+3.5	+51	+81	+8	+33

*JN Baldee 1061 is bred to Turning Point for a fall calf.***Lot 111**

JN Balder 4126
JN Balder 8079
 JN Baldee 079
 JN Balder 4136
JN Baldee 844
 JN Baldee 451

JN BALDEE 1068**HB001881**

ANIMAL DATA	DOB	ACT BW	ADJ WW	WEANING RATIO	YEARLING SC
	3-6-2010	98	589	107	N/A
1-15-10 WEIGHT	ADJ YW	YEARLING RATIO	DAILY GAIN ON TEST	% HEREFORD	HOMOZYGOUS BLACK
N/A	972	118	N/A	62	YES
EPD'S	BW	WW	YW	M	M&G
	+5.9	+50	+85	+18	+43

Bred for a fall calf to Turning Point.

**Annual Bull Cost Per Weaned Calf
 Years Bull Used:**

<u>Purchase \$</u>	1	2	3	4
\$2,000	102	43	24	14
\$2,500	124	54	31	19
\$3,000	147	66	39	25
\$3,500	169	77	46	31
\$4,000	191	88	53	36

*** 25 cows per bull**

COW-CALF PAIRS

Lot **112**

JN Balder 1905
JN Balder 7130 (AMF)
 JN Baldee 130 (AMF)

JN BALDEE 905

HB001303

Feltons 620
JN Baldee 780
 JN Baldee 429

ANIMAL DATA	DOB	ACT BW	ADJ WW	WEANING RATIO	YEARLING SC
	2-18-2009	66	521	89	N/A
1-15-10 WEIGHT	ADJ YW	YEARLING RATIO	DAILY GAIN ON TEST	% HEREFORD	HOMOZYGOUS BLACK ?
N/A	725	97	N/A	68%	NO
EPD'S	BW	WW	YW	M	M&G
	+1.6	+42	+69	+13	+34

*JN Baldee 905 is bred back to Turning Point for a fall calf.
 At her side is Y21, a RWF heifer out of JN Balder 4136, born 9-5-2011.*

Lot **113**

Feltons Langworth 249
JN Balder 4136
 JN Baldee 136

JN BALDEE 947

HB001265

JN Balder 1905
JN Baldee 610
 JN Baldee 969

ANIMAL DATA	DOB	ACT BW	ADJ WW	WEANING RATIO	YEARLING SC
	3-7-2009	81	512	87	N/A
1-15-10 WEIGHT	ADJ YW	YEARLING RATIO	DAILY GAIN ON TEST	% HEREFORD	HOMOZYGOUS BLACK ?
N/A	716	96	N/A	68%	NO
EPD'S	BW	WW	YW	M	M&G
	+4.2	+47	+77	+6	+30

*JN Baldee 947 is bred to Turning Point for a fall calf.
 At her side is a BWF heifer calf, Y20, out of 4136, born 9-1-2011*



Lot **114**

JN Balder 1905
JN Balder 7130 (AMF)
 JN Baldee 130 (AMF)

JN BALDEE 948

HB001290

JN Balder 2903
JN Baldee 732
 JN Baldee 110

ANIMAL DATA	DOB	ACT BW	ADJ WW	WEANING RATIO	YEARLING SC
	3-8-2009	79	483	82	N/A
1-15-10 WEIGHT	ADJ YW	YEARLING RATIO	DAILY GAIN ON TEST	% HEREFORD	HOMOZYGOUS BLACK ?
N/A	687	92	N/A	65%	NO
EPD'S	BW	WW	YW	M	M&G
	+3.6	+40	+66	+11	+31

*Bred back to Turning Point.
 She has R/W bull calf at her side born 9-5-2011 out of 4136.*

Lot 115JN Balder 1905
JN Balder 7130 (AMF)
JN Baldee 130 (AMF)**JN BALDEE 962****HB001282**JN Balder 2903
JN Baldee 714
JN Baldee 212

ANIMAL DATA	DOB	ACT BW	ADJ WW	WEANING RATIO	YEARLING SC
	3-13-2009	73	511	87	N/A
1-15-10 WEIGHT	ADJ YW	YEARLING RATIO	DAILY GAIN ON TEST	% HEREFORD	HOMOZYGOUS BLACK ?
N/A	704	95	N/A	65%	NO
EPD'S	BW	WW	YW	M	M&G
	+2.6	+42	+70	+9	+29

JN Baldee 962 is bred back to Turning Point for a fall calf. At her side is a homozygous black bull calf, Y10, out of JN Balder 4136, born 9-25-2011.



In an analysis done by Dailey and Earley, in their study, "The Impacts of Crossbreeding", two pens of steers raised by Angus cows were compared, one sired by Angus bulls and one sired by red Hereford bulls. In a separate study conducted by the ABHA in conjunction with Cedar Hill Cattle, Inc., of Howells, Nebraska, Black Hereford sired steers from a different set of Angus cows were compared.

	Angus Sired	Red Hereford Sired	Black Hereford Sired
Number of head	63	56	60
In weight (lb.)	645	637	728
Out weight (lb.)	1,236	1,232	1,404
Days on feed	162	163	172
ADG (average daily gain)	3.28	3.65	3.93
Dry matter conversion	5.64	4.92	5.90
% of choice or better	75	52	71
% select	23	48	29